

REVISIONS		
NO.	DESCRIPTION	DATE



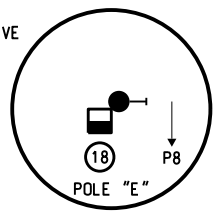
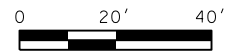
R10-12M (OKC STD.)  
30"x36"

LEGEND. SYMBOL & BORDER - BLACK NON-REFLECTIVE  
ARROW - YELLOW REFLECTIVE  
BACKGROUND - WHITE REFLECTIVE

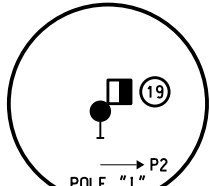
INSTALL SERVICE POLE NEXT TO R/W WITH 2" CONDUIT TO FLASHING ASSEMBLIES.

INSTALL W3-3E FLASHING ASSEMBLY 600' FROM N.W. 192nd ST. SEE SHEET T10.

S.H. 74  
POSTED SPEED = 65 m.p.h.

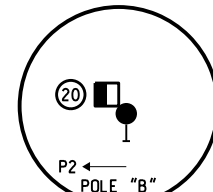


POLE "E"  
STA. 1011+11.3, 49.4' LT.

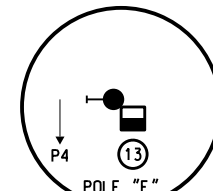


POLE "I"  
STA. 1011+11.3, 49.4' LT.

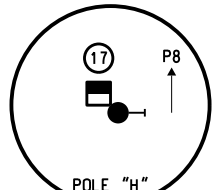
CONTROLLER "A"



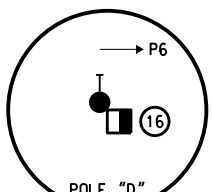
POLE "B"  
STA. 1012+69.5, 74.5' LT.



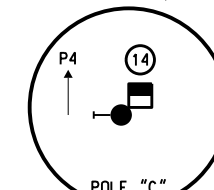
POLE "F"  
STA. 1012+83.3, 56.9' LT.



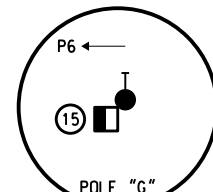
POLE "H"  
STA. 1011+19.8, 59.7' RT.



POLE "D"  
STA. 1011+30.9, 75.0' RT.



POLE "C"  
STA. 1012+82.6, 57.3' RT.



POLE "G"  
STA. 1012+67.3, 75.7' RT.

N.W. 192nd ST.  
POSTED SPEED = 45 m.p.h.

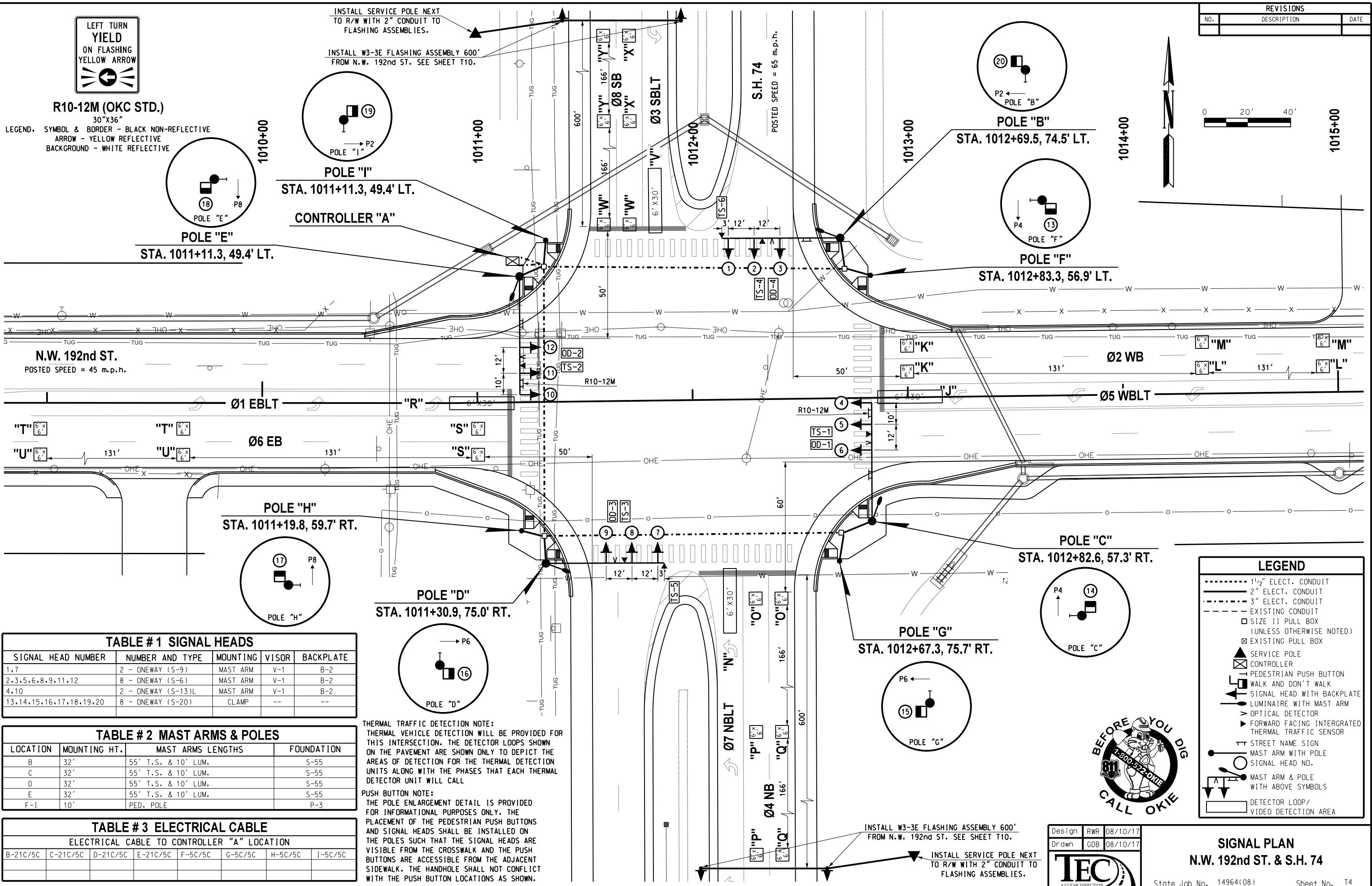


TABLE # 1 SIGNAL HEADS

SIGNAL HEAD NUMBER	NUMBER AND TYPE	MOUNTING	VISOR	BACKPLATE
1,7	2 - ONEWAY (S-9)	MAST ARM	V-1	B-2
2,3,5,6,8,9,11,12	8 - ONEWAY (S-6)	MAST ARM	V-1	B-2
4,10	2 - ONEWAY (S-13)L	MAST ARM	V-1	B-2
13,14,15,16,17,18,19,20	8 - ONEWAY (S-20)	CLAMP	--	--

TABLE # 2 MAST ARMS & POLES

LOCATION	MOUNTING HT.	MAST ARMS LENGTHS	FOUNDATION
B	32'	55' T.S. & 10' LUM.	S-55
C	32'	55' T.S. & 10' LUM.	S-55
D	32'	55' T.S. & 10' LUM.	S-55
E	32'	55' T.S. & 10' LUM.	S-55
F-I	10'	PED. POLE	P-3

TABLE # 3 ELECTRICAL CABLE

ELECTRICAL CABLE TO CONTROLLER "A" LOCATION							
B-21C/5C	C-21C/5C	D-21C/5C	E-21C/5C	F-5C/5C	G-5C/5C	H-5C/5C	I-5C/5C

Thermal Traffic Detection Note:  
Thermal vehicle detection will be provided for this intersection. The detector loops shown on the pavement are shown only to depict the areas of detection for the thermal detection units along with the phases that each thermal detector unit will call.

Push Button Note:  
The pole enlargement detail is provided for informational purposes only. The placement of the pedestrian push buttons and signal heads shall be installed on the poles such that the signal heads are visible from the crosswalk and the push buttons are accessible from the adjacent sidewalk. The handhole shall not conflict with the push button locations as shown.

**LEGEND**

- 1/2" ELECT. CONDUIT
- 2" ELECT. CONDUIT
- 3" ELECT. CONDUIT
- EXISTING CONDUIT
- SIZE 11 PULL BOX (UNLESS OTHERWISE NOTED)
- EXISTING PULL BOX
- SERVICE POLE
- CONTROLLER
- PEDESTRIAN PUSH BUTTON
- WALK AND DON'T WALK
- SIGNAL HEAD WITH BACKPLATE
- LUMINAIRE WITH MAST ARM
- OPTICAL DETECTOR
- FORWARD FACING INTEGRATED THERMAL TRAFFIC SENSOR
- STREET NAME SIGN
- MAST ARM WITH POLE
- SIGNAL HEAD NO.
- MAST ARM & POLE WITH ABOVE SYMBOLS
- DETECTOR LOOP/VIDEO DETECTION AREA



Design: RWR 08/10/17  
Drawn: GDB 08/10/17

**SIGNAL PLAN**  
N.W. 192nd ST. & S.H. 74

08/10/17 G:\OP\Projects\1662B\_S1 74 e NW 192nd, NW 192nd & NW 206th\CAD\NW 192nd SIG.dgn